

CONTENTS

PREFACE

xvi

PART I: DATABASE CONCEPTS

FILE SYSTEMS AND DATABASES

Preview	3
1.1 Introducing the Database	4
1.1.1 Why Database Design is Important	6
1.1.2 A Practical Approach to Database Design	6
1.2 The Historical Roots of the Database: Files and File Systems	7
1.3 A File System Critique	12
1.3.1 File System Data Management	12
1.3.2 Structural and Data Dependence	14
1.3.3 Field Definitions and Naming Conventions	14
1.3.4 Data Redundancy	16
1.4 Database Systems	17
1.4.1 The Database System Environment	18
1.4.2 Types of Database Systems	21
1.4.3 DBMS Functions	23
1.4.4 Managing the Database System: A Shift in Focus	25
1.4.5 Database Design and Modeling	25
1.5 Database Models	26
1.5.1 The Hierarchical Database Model	28
1.5.2 The Network Database Model	34
1.5.3 The Relational Database Model	38
Summary	43
Key Terms	46
Review Questions	47
Problems	48
References	53

THE RELATIONAL DATABASE MODEL

Preview	55
2.1 A Logical View of Data	56
2.1.1 Entities and Attributes	56
2.1.2 Tables and Their Characteristics	57
2.2 Keys	62

2.3 Integrity Rules Revisited	68
2.4 Relational Database Operators	70
2.5 Relational Database Software Classification	76
2.6 The Data Dictionary and the System Catalog	77
2.7 Relationships Within the Relational Database	79
2.8 Data Redundancy Revisited	88
2.9 Indexes	92
Summary	93
Key Terms	95
Review Questions	95
Problems	98
References	107

AN INTRODUCTION TO STRUCTURED QUERY LANGUAGE (SQL)

Preview	109
3.1 Introduction to SQL	110
3.2 Data Definition Commands	111
3.2.1 The Database Model	111
3.2.2 The Tables and Their Components	112
3.2.3 Creating the Database Structure	113
3.2.4 Creating Table Structures	114
3.2.5 SQL Integrity Constraints	120
3.3 Basic Data Management	121
3.3.1 Data Entry	121
3.3.2 Checking the Table Contents	123
3.3.3 Saving the Table Contents	124
3.3.4 Adding Data to the Table	125
3.3.5 Making a Correction	125
3.3.6 Restoring the Table Contents	126
3.3.7 Deleting Table Rows	126
3.4 Queries	127
3.4.1 Partial Listing of Table Contents	127
3.4.2 Logical Operators: AND, OR, and NOT	131
3.4.3 Special Operators	134
3.5 Advanced Data Management Commands	138
3.5.1 Changing a Column's Data Type	138
3.5.2 Changing Attribute Characteristics	139
3.5.3 Adding a Column to the Table	139
3.5.4 Entering Data into the New Column	140
3.5.5 Copying Parts of Tables	143
3.5.6 Deleting a Table from the Database	144
3.5.7 Primary and Foreign Key Designation	145

3.6 More Complex Queries and SQL Functions	145
3.6.1 Ordering a Listing	146
3.6.2 Listing Unique Values	149
3.6.3 SQL's Numeric Functions	150
3.6.4 Grouping Data	155
3.6.5 Virtual Tables: Creating a View	157
3.6.6 SQL Indexes	158
3.6.7 Joining Database Tables	158
Summary	162
Key Terms	169
Review Questions	170
Problems	173
References	185



PART II: DESIGN CONCEPTS

ENTITY RELATIONSHIP (E-R) MODELING

Preview	187
4.1 Basic Modeling Concepts	188
4.2 Data Models: Degrees of Data Abstraction	189
4.2.1 The Conceptual Model	190
4.2.2 The Internal Model	193
4.2.3 The External Model	194
4.2.4 The Physical Model	196
4.3 The Entity Relationship (E-R) Model	197
4.3.1 E-R Model Components	198
4.3.2 Entities	198
4.3.3 Attributes	198
4.3.4 Relationships	204
4.3.5 Connectivity	206
4.3.6 Cardinality	207
4.3.7 Existence Dependency	210
4.3.8 Relationship Participation	211
4.3.9 Weak Entities	214
4.3.10 Recursive Entities	216
4.3.11 Composite Entities	218
4.3.12 Entity Supertypes and Subtypes	221
4.3.13 E-R Component Summary	225

4.4 Developing an E-R Diagram	226
4.4.1 Converting an E-R Model into a Database Structure	234
4.4.2 General Rules Governing Relationships Among Tables	240
4.4.3 Converting Tiny College's E-R Model to the SQL Database	249
4.4.4 Building Another E-R Model	254
4.4.5 Considering Additional Requirements	257
4.5 A Comparison of E-R Modeling Symbols	258
4.6 The Challenge of Database Design: Conflicting Goals	263
Summary	265
Key Terms	268
Review Questions	269
Problems	272
References	278

NORMALIZATION OF DATABASE TABLES

Preview	281
5.1 Database Tables and Normalization	282
5.1.1 The Need for Normalization	282
5.1.2 Conversion to First Normal Form	285
5.1.3 Conversion to Second Normal Form	289
5.1.4 Conversion to Third Normal Form	290
5.1.5 The Boyce-Codd Normal Form (BCNF)	294
5.2 Normalization and Database Design	297
5.3 Higher-Level Normal Forms	301
5.4 Denormalization	303
Summary	304
Key Terms	307
Review Questions	307
Problems	308
References	314



PART III: ADVANCED DESIGN AND IMPLEMENTATION

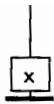
DATABASE DESIGN

Preview	317
6.1 Changing Data into Information	318
6.2 The Information System	319

6.3 The Systems Development Life Cycle (SDLC)	320
6.3.1 Planning	321
6.3.2 Analysis	322
6.3.3 Detailed Systems Design	323
6.3.4 Implementation	323
6.3.5 Maintenance	324
6.4 The Database Life Cycle (DBLC)	324
6.4.1 The Database Initial Study	324
6.4.2 Database Design	330
6.4.3 Implementation and Loading	348
6.4.4 Testing and Evaluation	353
6.4.5 Operation	353
6.4.6 Maintenance and Evolution	354
6.5 A Special Note About Database Design Strategies	354
6.6 Centralized Versus Decentralized Design	355
Summary	359
Key Terms	361
Review Questions	362
Problems	362
References	364

THE UNIVERSITY LAB: CONCEPTUAL DESIGN

Preview	367
7.1 The Database Initial Study	368
7.1.1 UCL Objectives	369
7.1.2 Organizational Structure	369
7.1.3 Description of Operations	370
7.1.4 Problems and Constraints	376
7.1.5 System Objectives	378
7.1.6 Scope and Boundaries	380
7.2 Database Design Phase: Conceptual Design	382
7.2.1 Information Sources and Users	383
7.2.2 Information Needs: User Requirements	384
7.2.3 Developing the Initial Entity Relationship Model	387
Summary	399
Key Terms	400
Review Questions	401
Problems	401



**THE UNIVERSITY LAB: CONCEPTUAL DESIGN
VERIFICATION, LOGICAL DESIGN, AND IMPLEMENTATION**

Preview	409
8.1 Preparing to Complete the Conceptual Database Design	410
8.2 Completing the Conceptual Design: Entities, Attributes, and Normalization	412
8.2.1 The Lab Management System Module	412
8.2.2 The Inventory Management Module	424
8.3 E-R Model Verification	443
8.4 Logical Design	450
8.4.1 Tables	450
8.4.2 Indexes and Views	452
8.5 Physical Design	453
8.6 Implementation	454
8.6.1 Database Creation	454
8.6.2 Database Loading and Conversion	455
8.6.3 System Procedures	455
8.7 Testing and Evaluation	456
8.7.1 Performance Measures	456
8.7.2 Security Measures	457
8.7.3 Backup and Recovery Procedures	457
8.8 Operation	458
8.8.1 Database Is Operational	458
8.8.2 Operational Procedures	458
8.8.3 Managing the Database: Maintenance and Evolution	458
Summary	459
Review Questions	461
Problems	462



PART IV: ADVANCED DATABASE CONCEPTS

TRANSACTION MANAGEMENT AND CONCURRENCY CONTROL

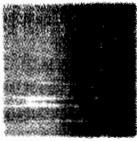
Preview	465
9.1 What Is a Transaction?	466
9.1.1 Evaluating Transaction Results	467
9.1.2 Transaction Properties	469
9.1.3 Transaction Management with SQL	470
9.1.4 The Transaction Log	471

9.2 Concurrency Control	472
9.2.1 Lost Updates	472
9.2.2 Uncommitted Data	473
9.2.3 Inconsistent Retrievals	474
9.2.4 The Scheduler	476
9.3 Concurrency Control with Locking Methods	477
9.3.1 Lock Granularity	478
9.3.2 Lock Types	481
9.3.3 Two-Phase Locking to Ensure Serializability	483
9.3.4 Deadlocks	484
9.4 Concurrency Control with Time Stamping Methods	485
9.5 Concurrency Control with Optimistic Methods	486
9.6 Database Recovery Management	486
Summary	488
Key Terms	490
Review Questions	491
Problems	491
References	492

CHAPTER 10 **DISTRIBUTED DATABASE MANAGEMENT SYSTEMS**

Preview	495
10.1 The Evolution of Distributed Database Management Systems	496
10.1.1 DDBMS Advantages	497
10.1.2 DDBMS Disadvantages	498
10.2 Distributed Processing and Distributed Databases	499
10.3 What Is a Distributed Database Management System?	502
10.4 DDBMS Components	504
10.5 Levels of Data and Process Distribution	506
10.5.1 Single-Site Processing, Single-Site Data (SPSD)	506
10.5.2 Multiple-Site Processing, Single-Site Data (MPSD)	507
10.5.3 Multiple-Site Processing, Multiple-Site Data (MPMD)	509
10.6 Distributed Database Transparency Features	511
10.7 Distribution Transparency	512
10.8 Transaction Transparency	515
10.8.1 Distributed Requests and Distributed Transactions	515
10.8.2 Distributed Concurrency Control	520
10.8.3 Two-Phase Commit Protocol	521
10.9 Performance Transparency and Query Optimization	523
10.10 Distributed Database Design	525
10.11 Data Fragmentation	525
10.11.1 Horizontal Fragmentation	526
10.11.2 Vertical Fragmentation	527
10.11.3 Mixed Fragmentation	528
10.12 Data Replication	530

10.13 Data Allocation	532
10.14 Client/Server Architecture	533
10.15 C. J. Date's Twelve Commandments for Distributed Databases	534
Summary	536
Key Terms	537
Review Questions	538
Problems	539
References	542



PART V: NEW DEVELOPMENTS

OBJECT-ORIENTED DATABASES

Preview	545
11.1 Object Orientation and Its Benefits	546
11.2 The Evolution of Object-Oriented Concepts	546
11.3 Object-Oriented Concepts	548
11.3.1 Objects: Components and Characteristics	548
11.3.2 Object Identity	549
11.3.3 Attributes (InstanceVariables)	549
11.3.4 Object State	551
11.3.5 Messages and Methods	551
11.3.6 Classes	553
11.3.7 Protocol	554
11.3.8 Superclasses, Subclasses, and Inheritance	555
11.3.9 Method Overriding and Polymorphism	559
11.3.10 Abstract Data Types	560
11.3.11 Object Classification	562
11.4 An Object-Oriented Class Definition Example	563
11.5 The Evolution of Data Models	567
11.6 Characteristics of an Object-Oriented Data Model	569
11.6.1 Object Schemas: The Graphical Representation of Objects	571
11.6.2 Class-Subclass Relationships	575
11.6.3 Interobject Relationships: Attribute-Class Links	576
11.6.4 Late and Early Binding: Use and Importance	585
11.6.5 Support for Versioning	587
11.7 OODM and Previous Data Models: Similarities and Differences	588
11.7.1 Object, Entity, and Tuple	588
11.7.2 Class, Entity Set, and Table	589

11.7.3	Encapsulation and Inheritance	589
11.7.4	Object ID	589
11.7.5	Relationships	589
11.7.6	Access	590
11.8	Object-Oriented Database Management Systems	590
11.8.1	Features of an Object-Oriented DBMS	592
11.8.2	Contrasting Traditional and Object-Oriented DBMS	595
11.9	How Object Orientation Affects Database Design	597
11.10	OODBMS: Pros and Cons	599
11.11	How OO Concepts Have Influenced the Relational Model	601
11.12	The Next Generation of Database Management Systems	603
	Summary	604
	Key Terms	606
	Review Questions	606
	Problems	608
	References	609

CLIENT/SERVER SYSTEMS

Preview		613
12.1	What is Client/Server?	614
12.2	The Forces that Drive Client/Server Systems	615
12.2.1	The Changing Business Environment	616
12.2.2	The Need for Enterprise Data Access	616
12.2.3	End User Productivity Gains Based on the Use of Data Resources	617
12.2.4	Technological Advances	617
12.2.5	Cost/Performance Advantages of the PC-Based Platform	618
12.3	The Evolution of Client/Server Information Systems	619
12.4	Managerial Expectations of Client/Server Systems Benefits	622
12.4.1	MIS Expectations of Client/Server Benefits	623
12.4.2	Organizational Expectations of Client/Server Benefits	626
12.5	Client/Server Architecture	627
12.5.1	How Components Interact	628
12.5.2	Client/Server Principles	630
12.5.3	Client Components	632
12.5.4	Server Components	634
12.5.5	Communications Middleware Components	636
12.5.6	Network Protocols	643
12.5.7	Database Middleware Components	644
12.5.8	Middleware Classifications	649
12.6	The Quest for Standards	650
12.7	Client/Server Databases	652
12.8	Client/Server Architectural Styles	654

12.9 Client/Server Implementation Issues	660
12.9.1 Client/Server versus Traditional Data Processing	661
12.9.2 Managerial Considerations	663
12.9.3 Client/Server Development Tools	665
12.9.4 An Integrated Approach	666
Summary	667
Key Terms	669
Review Questions	669
References	670

THE DATA WAREHOUSE

Preview	677
13.1 The Need For Data Analysis	678
13.2 Decision Support Systems	678
13.2.1 Operational Data vs. Decision Support Data	681
13.2.2 The DSS Database Requirements	685
13.3 The Data Warehouse	688
13.3.1 The Evolution of the Data Warehouse	693
13.3.2 Twelve Rules that Define a Data Warehouse	697
13.4 On-Line Analytical Processing (OLAP)	698
13.4.1 OLAP Architecture	701
13.4.2 Relational OLAP	706
13.4.3 Multidimensional OLAP	708
13.4.4 Relational versus Multidimensional OLAP	710
13.5 Star Schemas	711
13.5.1 Facts	711
13.5.2 Dimensions	712
13.5.3 Attributes	713
13.5.4 Attribute Hierarchies	717
13.5.5 Star Schema Representation	719
13.5.6 Performance-Improving Techniques	722
13.6 Data Warehouse Implementation	726
13.6.1 The Data Warehouse as an Active Decision Support Framework	726
13.6.2 A Company-Wide Effort that Requires User Involvement and Commitment at All Levels	727
13.6.3 Satisfy the Trilogy: Data, Analysis, and Users	728
13.6.4 Apply Database Design Procedures	728
13.7 Data Mining	729
Summary	733
Key Terms	735
Review Questions	736
Problems	737
References	741

PART VI: DATABASE ADMINISTRATION

DATABASE ADMINISTRATION

Preview	747
14.1 Data as a Corporate Asset	748
14.2 The Need for and Role of Databases in an Organization	750
14.3 Introduction of a Database: Special Considerations	753
14.4 The Evolution of the Database Administration Function	755
14.5 The Database Environment's Human Component	761
14.5.1 The DBA's Managerial Role	764
14.5.2 The DBA's Technical Role	773
14.6 Database Administration Tools	781
14.6.1 The Data Dictionary	781
14.6.2 CASE Tools	785
14.7 Developing a Data Administration Strategy	788
Summary	791
Key Terms	793
Review Questions	793
References	795

CLIENT/SERVER NETWORK INFRASTRUCTURE

PREVIEW	A 3
NETWORK CABLING	A 4
NETWORK TOPOLOGY	A 4
NETWORK TYPES	A 7
NETWORK COMMUNICATIONS DEVICES	A 8
KEY TERMS	A 9